

**CITY OF STORM LAKE
LAKE IMPROVEMENT COMMISSION
CITY HALL - COUNCIL CHAMBERS
SEPTEMBER 29, 2025
4:00 PM**



PO Box 1086
Storm Lake, IA 50588
p (712) 732-8000
f (712) 732-4114

AGENDA

Access to the official meeting can also be done through the following ways:

BY TELEPHONE

Dial: 1-312-626-6799 or toll-free 1-888 475-4499

Zoom Meeting ID: 839 7841 7773

BY COMPUTER:

<https://us06web.zoom.us/j/83978417773>

Open the Meeting

- **Call to Order**

A. New Business

1. Motion to Approve July 28, 2025 LIC Minutes
2. Storm Lake Aquatic Vegetation Management Plan
3. Motion to approve 28E Agreement
4. Financial Report September 2025

B. Adjourn

Meeting Protocol

If you wish to speak today, please:

1. To speak on an agenda item, please approach the podium when that agenda item is called, and upon recognition by the Mayor, identify yourself by stating your name and address.
2. If your issue is not a topic on the agenda, please approach the podium under the "Hear the Public" agenda item, and upon recognition by the Mayor, identify yourself by stating your name and address.
3. Please keep your remarks to three (3) minutes or less.
4. If you require accommodation for this meeting, including but not limited to translation services, hearing assistance, or accessibility, please contact the City Clerk at least four (4) hours prior to the start of the meeting.

Staff Summary

9/29/2025

Agenda Item # A.1.



PO Box 1086
Storm Lake, IA 50588
p (712) 732-8000
f (712) 732-4114

REPORT TO:

FROM: Mayra Martinez, City Clerk

SUBJECT: **Motion to Approve July 28, 2025 LIC Minutes**

BACKGROUND: Approve July 28/, 2025 LIC Minutes

FISCAL IMPACT:

RECOMMENDATION:

ATTACHMENTS:

1. 07/28/2025 LIC Minutes

**LAKE IMPROVEMENT COMMISSION, CITY OF STORM LAKE, CITY HALL
COUNCIL CHAMBERS, JULY 28, 2025, 4:00 PM**

**LAKE IMPROVEMENT COMMISSION, CITY OF STORM LAKE, CITY HALL
COUNCIL CHAMBERS, JULY 28, 2025, 4:00 PM**

Present: Commission Members: Meg McKeon (City of Storm Lake), Kathy Croker (Buena Vista County), Michael Porsch (City of Storm Lake), Doug White (City of Lakeside) and Dan Hartman (Buena Vista County). Absent: Commissioners Ryan Mohr (LPA) and John Armstrong (LPA).

Others Present: City Manager Keri Navratil (City of Storm Lake), Nelda Kirkholm Commission Secretary (City of Storm Lake), Finance Director Tyler Gibbins, and City Communications Director Dana Larsen.

Media Present: Allison Moore with The Storm Lake Times Pilot

Chairman McKeon opened the meeting at 4:10 pm.

New Business

Minutes - Moved by Commissioner Croker to approve June 30, 2025, Lake Improvement Commission minutes. Seconded by Commissioner White. Vote: All ayes with Commissioners Mohr and Armstrong absent. Motion carried.

Financial Report – Finance Director Tyler Gibbins reported that the financials for July 2025 have not changed from last month’s report as he is still in the process of closing out fiscal year 2025. There haven’t been any fiscal year end allocations made at this time and any new changes made will be reflected in the new financial report at the next LIC meeting. Moved by Commissioner Hartman to approve the July 2025 Financial Report. Seconded by Commissioner White. Vote: All ayes with Commissioners Mohr and Armstrong absent. Motion carried.

LIC Insurance – Tyler Gibbins commented that in response to recent conversations, Mike Pertzborn with Stille, Pierce and Pertzborn sent out an email addressing the LIC’s current three policies outlining the 28E agreement. Currently there is a general liability of \$1,000,000 per occurrence with a \$2,000,000 aggregate. We have an umbrella for excess liability of \$4,000,000 per occurrence with a \$4,000,000 aggregate. The third insurance is professional liability for members, and the insurance is \$1,000,000 coverage.

Tony Pertzborn and Jerod Brashears with Stille, Pierce and Pertzborn were present to address questions presented by the Commissioners regarding reductions in liability coverage and costs of the insurance policies.

After discussions with Tony Pertzborn and Jerod Brashears, the Commissioners recommendation was to proceed with the general liability insurance coverages of \$1M per occurrence and \$2M aggregate and drop the excess liability coverage policy for a potential return of premium depending on timing of the termination.

**LAKE IMPROVEMENT COMMISSION, CITY OF STORM LAKE, CITY HALL
COUNCIL CHAMBERS, JULY 28, 2025, 4:00 PM**

28E Agreement – City Manager Keri Navratil reviewed the red lined item changes of the 28E agreement with the Commissioners. City Manager Navratil will update the 28E agreement with the Commissioner’s recommended changes and will send the revised version to the Commissioners for them to take to their respective organizations to review, make additional changes and approve at their next board or City meetings. The changes and approvals will need to be brought back to the next LIC meeting for final approval by the Commissioners.

Next Meeting Date: September 29, 2025, at 4:00 pm.

Adjourn – Moved by Commissioner White to adjourn at 4:58 pm. Seconded by Commissioner Croker.

Meg McKeon, Chair

ATTEST:

Mayra A. Martines, City Clerk

Staff Summary

9/29/2025
Agenda Item # A.2.



PO Box 1086
Storm Lake, IA 50588
p (712) 732-8000
f (712) 732-4114

REPORT TO:

FROM: Keri Navratil, City Manager

SUBJECT: **Storm Lake Aquatic Vegetation Management Plan**

BACKGROUND: In spring of 2018, Storm Lake began to have unusually clear water. Due to the increased water clarity, aquatic vegetation has flourished and can be found throughout most of the lake basin. In recent years, the vegetation growth and presence of floating/dislodged vegetation has led to complaints from lake users.

In 2022, the DNR in cooperation with the Storm Lake Improvement Commission prepared the Storm Lake Aquatic Vegetation Management Plan. In order to continue to receive funds from the DNR to assist in the vegetation management plan, the Lake Improvement Commission needs to review the plan. At this time, the DNR is not recommending any changes to the plan.

FISCAL IMPACT: The City of Storm Lake pays for the chemical used to treat vegetation.

RECOMMENDATION: Approve plan

ATTACHMENTS:

- 1. Storm Lake Aquatic Vegetation Management Plan 2025

Storm Lake Aquatic Vegetation Management Plan

Original Plan Approved 2022
Reviewed 2025



Prepared by the Iowa DNR in cooperation with the Storm Lake Improvement Commission. Text and references, in part, from Iowa State University Extension, 1998, Managing Iowa Fisheries, Aquatic Plant Management; Borman, S., R. Horth, and J. Temte, 1997, Through the Looking Glass: A Field Guide to Aquatic Plants; Cashatt, D. 2013, Aquatic Plant Best Management Practices for Iowa's Public Lakes, Iowa DNR.

I. INTRODUCTION

A. Background Information

Storm Lake is a natural and sovereign lake in Buena Vista County and has been identified as the fourth largest glacial lake in Iowa. Storm Lake is 3,140 acres per most recent lake mapping efforts (October 2018). The lake is bowl shaped with a shallow basin slope, which is typical of glacial lakes in the region (Appendix A). The maximum depth of the lake is 20.3 feet with a mean depth of 8.6 feet. Storm Lake supports a multitude of recreational activities (Figure 1).

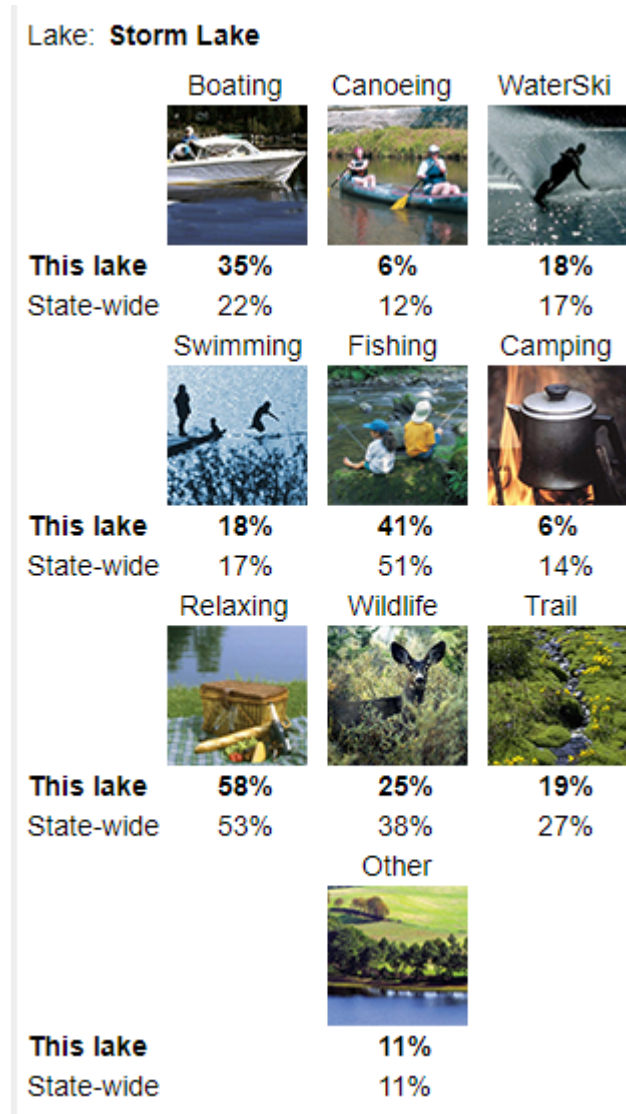


Figure 1.— Popularity of water related activities at Storm Lake relative to the statewide average based on survey responses in the 2014 Iowa Lake Survey.

Little Storm Lake is approximately 150 acres with a mean depth of about 1.5 feet located at the west end of Storm Lake. The Little Storm Lake complex intercepts a large portion of runoff from the Storm

Lake watershed. A major construction project was completed in 2012 to allow natural resource managers to manipulate water levels and manage rough fish for the purposes of improving water quality. For these reasons, Little Storm Lake will not be considered in this aquatic vegetation management plan.

Historically, Storm Lake had suffered from high turbidity, cyanobacteria blooms, and occasionally tests high for indicator bacteria. These issues are due to an influx of nutrients, specifically phosphorus, and sediment from the watershed as well as some internal recycling and re-suspension of nutrients and sediment. The status of the water quality led to several studies and monitoring efforts to determine the best course of action to improve the situation. One major finding was that sediment and nutrient re-suspension from wind and wave action was a large contributor to the water quality issues. This prompted a large scale hydraulic dredging effort aimed at deepening the lake to reduce amount of lake bed that would be disturbed during high wind events. Over the course of this effort, more than 7,000,000 cubic yards of material were dredged. Urban conservation practices, best management practices in the rural watershed, island construction, and other projects have been implemented in an effort to improve water quality and clarity. Dredging ceased in 2017. Zebra mussels were discovered in the fall of 2018. In addition to Zebra Mussels, Rusty Crayfish and Common Carp are two other exotic species that are present in Storm Lake.

In the spring of 2018, natural resource managers observed unusually clear water, with Secchi disk readings as deep as 4.5 feet in April. Each year the water clarity has improved and by June of 2021, 8.5 feet Secchi disk readings were observed. Due to the increased water clarity, aquatic vegetation has flourished and can be found throughout most of the lake basin. In recent years, the vegetation growth and presence of floating/dislodged vegetation has led to complaints from lake users.

B. Importance of Aquatic Vegetation

Aquatic plant life can come in a variety of forms that provide benefits, but it can also create challenges. Algae and cyanobacteria are among the most primitive forms of aquatic life with many different species that can create turbid water, harm fish populations, emit foul odors, and some forms can produce toxins. Conversely, aquatic macrophytes can promote clean water and healthy fish populations, but can interfere with some forms of aquatic recreation. Similar to terrestrial plants, aquatic plants need nutrients, such as nitrogen and phosphorus, to facilitate growth. It is imperative that stakeholders understand how primary production (e.g., plant growth) affects aquatic ecosystems and the consequences of vegetation management.

Iowa tends to have very fertile watersheds and the receiving water bodies act as nutrient sinks. Therefore, many of Iowa's lakes are highly eutrophic, including Storm Lake. The concept of alternative stable states in shallow freshwater ecosystems has been the subject of research for decades. In Iowa, shallow eutrophic lakes are either in the turbid water or clear water state. Turbid water ecosystems lack aquatic macrophytes, exhibit poor water clarity, and are dominated by rough fish and algae. Blue-green algae (cyanobacteria) are often the dominant variety of autotrophs in highly eutrophic systems and can produce toxins that are harmful to humans and other animals. Blue-green algae often produce foul

odors as well. Lakes in a turbid water state are prone to natural fish kills brought on by mass die offs of algae, which robs the ecosystem of dissolved oxygen. Extreme changes to the ecosystem, brought on by intense land use management or fish population manipulation, can cause a lake to shift from the turbid water to a clear water state. Healthy clear water ecosystems are often dominated by sportfish species and aquatic macrophytes. The diversity of both plant and animal species reflects a healthy environment with more recreational opportunities. Aquatic macrophytes provide many benefits to lakes and help keep water clean and clear. Macrophytes compete with algae species by taking up nutrients that can cause algae blooms. The dense root systems of macrophytes hold bottom sediments in place and keep nutrient laden silt from re-suspending in the water column. Macrophytes dissipate wave energy generated by wind or boating activity, which help hold bottom sediments in place. Aquatic plant life provides many benefits to fish and wildlife. Juvenile fish use it to seek cover from predators, yellow perch deposit their egg ribbons (skeins) on submerged vegetation, and fish and waterfowl feed on the invertebrate populations that colonize the habitat. While an ecosystem in the clear water state can be stable, anthropogenic disturbances, such as vegetation removal, and bioperturbation, such as common carp feeding activities, can flip the lake back to a turbid state.

C. Objective of the Aquatic Vegetation Management Plan

As fishery and wildlife scientists work together with communities to improve aquatic ecosystems they are met with new challenges. Storm Lake exhibited extremely poor water clarity over the past several decades. However, Storm Lake started to exhibit clearer water beginning in 2018. Macrophytes flourished in response to the proper growing conditions. While this indicates that Storm Lake is on the right path to becoming a healthy, diverse, and stable ecosystem, the growth of vegetation also presented new challenges. Several species of rooted plants reached the surface of the water and floating mats of filamentous algae impacted recreational boating and swimming in some areas. Perhaps the most common complaint was dislodged or cut macrophytes that drifted into shore and accumulated causes foul odors when it decomposed. While fishery managers acknowledge the importance of aquatic macrophytes to sport fish populations, it is also known that too much vegetation can be detrimental. In systems where there is too much vegetation, predator fish, such as walleye and largemouth bass, have difficulty finding prey, and panfish populations can spiral out of control and become stunted.

Predicting where and what species of aquatic vegetation will grow in a lake system is difficult, especially in a lake that has been void of macrophytes for so long. Several factors will affect the intensity and timing of vegetative growth. Cool springs can delay plant growth into the summer, whereas warm springs may cause plants to germinate earlier than normal. Substrate type can determine what, if any, plant may grow in a particular area. Bulrush is well suited to growing in shallow, sandy substrates while pondweeds grow well in substrate dominated by silt. Water depth can also determine where vegetation will grow and potentially reach the surface, or “top out.” Macrophytes will only persist where light can penetrate long enough for plants to carry out photosynthesis. In Iowa, a very general rule of thumb is that plants won’t top out beyond the 8 foot contour, but it all depends on water clarity. Because aquatic plant communities are dynamic, a management plan that is designed to adapt to changing conditions is the most effective strategy.

Lake managers and stakeholders should fully understand the consequences of managing or removing aquatic vegetation. If too much vegetation is removed, Storm Lake could flip back to a turbid water state and the time, money, and effort spent on restoring the system could be lost. While nutrient management is the best long term approach to managing aquatic plant life, in-lake vegetation management can improve recreational opportunities in the short term. This document serves as a guide toward achieving the latter. The objectives of the Storm Lake Vegetation Management Plan are as follows:

1. Provide a general understanding of the relationship between aquatic plant life and ecosystem health.
2. Identify acceptable methods and treatment options for managing aquatic vegetation.
3. Identify when and where vegetation management can or will occur.
4. Clearly identify the parties that are responsible for the different aspects associated with vegetation management.

This document should serve as a resource to both public agencies and private individuals that operate within their rights to manage aquatic vegetation in and on the sovereign water body of Storm Lake. This document should be reviewed each year and any changes should reflect real and significant issues that may develop during the restoration of Storm Lake and beyond.

II. Aquatic Plant Types

Emergent Plants: Plants that have leaves that extend above the water's surface and are usually found in shallow water. Common plants in this category include cattails, bulrush, and arrowhead.

Free-Floating Plants: Plants that are not attached to the bottom by roots or rhizomes. These plants are often small and can be found floating anywhere on the water's surface, depending on wind and currents. Common plants in this category include duckweed and watermeal.

Floating-leaf Plants: These are rooted plants with leaves that float on the surface. They are usually found at intermediate depths between the shallow emergent zone and the deeper submersed plant beds. Common plants in this category include water lily and lotus.

Submersed plants: These plants have most of their leaves growing underwater, but some floating leaves may also be present and some species may have flower stalks that stick up out of the water. They are found from shallow to deep water zones. Common plants in this category include milfoils, coontail, pondweeds, wild celery, and naiads.

Algae: Algae differ from other aquatic plants in that they do not produce flowers or seeds. The shape and size of algae can vary from microscopic single or multiple celled plants to branched plants that resemble submersed aquatic plants. Algae can be divided into three groups, including planktonic algae, filamentous algae, and the stoneworts. Common forms of algae found in Storm Lake include in green algae, blue-green algae (cyanobacteria), and filamentous algae.

III. Treatment Options

There are several methods that can be used to manage aquatic plants in pond and lakes systems. Each method of control should be carefully examined and the objectives of plant management should be clearly defined. Integrated plant management, which is the use of multiple control methods, is the best approach to achieving desired control of aquatic vegetation. This section of the Aquatic Vegetation Manual will address all forms of treatment options and discuss how and/or if they will be used.

A. Preventative Control

Preventative methods for aquatic vegetation control focus on inhibiting plant growth rather than controlling aquatic plants once they've been established. Substrate, depth, and nutrient levels are all factors that can determine where aquatic vegetation will grow.

The best long-term approach to controlling aquatic vegetation is through the installation of best management practices in the watershed. Reducing the delivery of sediments and nutrients to the lake can help to limit aquatic plant growth and reduce the amount of effort needed to actively manage vegetation within the lake.

Water depth is another factor that can determine where rooted aquatic vegetation will grow. Emergent plant species will not typically persist in more than three feet of water. Submergent plant species will only grow at depths where sunlight can penetrate long enough for the plant to carry out photosynthesis. Typically, submergent plants will not top out in more than 8 feet of water. However, water clarity will largely determine how deep sunlight can penetrate and where those plants will grow. If the lake is exceptionally clear in a particular year then plants may grow in water that is deeper than 8 feet. Conversely, if the water becomes more turbid then plants may be limited to shallower depths. Hydraulic dredging provides a means of deepening the lake and potentially limiting the areas in which submersed plants can grow.

Substrate type may dictate what types of plants will grow in a particular area, if any. Bottom blanketing is a method that could be used to create an environment unsuitable for plant growth. Sand, gravel, or rock rip rap may be placed to provide fish habitat while at the same time inhibiting plant growth. A barrier fabric may also be placed under the substrate to block sunlight and prevent plant growth. The effectiveness of these measures can decline over time as sediment is deposited over the altered substrate and allow plants to grow. Fabric that is installed in the spring may provide adequate control of vegetation in localized areas. Removal of that fabric in the fall will eliminate the build-up of sediments and maintain the effectiveness of the control each year that it is used. Bottom blanketing is best used in small, targeted areas, such as around docks, boat lifts, and beaches. However, at this time bottom blanketing is not a legal means of controlling aquatic vegetation on meandered sovereign lakes in Iowa.

B. Biological Control

Biological controls use organisms, such as fish or insects, to control aquatic plant growth. In Iowa, the use of grass carp (or white amur) for the suppression of rooted aquatic plants often leads to the complete eradication of aquatic plants. Complete eradication often results because grass carp reduce the plant population to a level that it no longer uses enough plant nutrients, shades, or has allelopathic

influences on the algae population during the growing season. This critically low plant density in the face of high levels of plant nutrients can result in dense algae blooms that shade out the remaining vegetation, which can be difficult to reverse. Grass carp will often target certain species of plants more than others. For example, grass carp will likely consume submersed plants before they feed on filamentous algae. The consumption of submersed plants may even lead to a stronger presence of algae. Grass carp can live over 30 years and experience very low mortality. So, for many years the lake may be held in a turbid state which negatively impacts the recreational fishery and lake aesthetics. For this reason grass carp are no longer being used as a vegetation control strategy by the Fisheries Bureau of the Iowa DNR in public waters and will not be allowed.

C. Chemical Control

Chemicals are often used to control aquatic plant growth through the use of herbicides, and sometimes, dyes. Chemical treatments can also be broken down into two types; whole lake treatments and spot treatments. Whole lake treatments are generally used on smaller bodies of water and come with the increased risk of algae blooms and fish kills. The use of herbicides is a short term means of control and can prove costly if used on a consistent basis. The use of dyes creates an environment which limits primary production by reducing light penetration, and is generally applied as a whole lake treatment. It is desirable to maintain a presence of some aquatic vegetation in Storm Lake. Furthermore, it would be cost prohibitive to conduct a whole lake chemical treatment on a lake the size of Storm Lake. Therefore, only spot treatments will be considered when using chemical as a means to controlling aquatic vegetation.

Spot treatments with herbicide may be used around high use areas, such as boat ramps, beaches, and popular fishing access points. Only persons with a Category 5 Certification can apply restricted use pesticides, including herbicides, to public water bodies. Additionally, only staff from the Iowa DNR, or municipalities working with approval of the Iowa DNR can apply or hire contractors to apply herbicide to sovereign lakes. Accurate records of herbicide applications must be kept for NPDES permitting.

Table 1.—Characteristics of common herbicides approved for aquatic use. Tx=Treatment, E=Emergent, F=Floating, FL=Floating-leaved, S=Submersed. Highlighted trade names were used to calculate cost figures.

Herbicide	Copper Complex	Diquat	Endothall	Glyphosate	2,4-D		Fluridone	Triclopyr
Trade Name examples	Cutrine Plus, Harpoon ¹ , Komeen ¹ & others	Reward, Weedtrine-D, Tribune	Aquathol K, Aquathol Super K	Rodeo & many others	Sculpin-G, Navigate Aquacide	AquaKleen, DMA 4 IVM	Sonar Q, Whitecap	Renovate ³ , Renovate OTF
Mode of Action	Contact	Contact	Contact	Systemic	Systemic		Systemic	Systemic
Formulation	Liquid, granular	Liquid	Liquid, granular	Liquid	Granular	Liquid	Liquid, granular	Liquid, granular
Selectivity	Algae, S	NS, F, FL, S	NS, FL, S	E & FL	Dicots, FL, S		NS, F, FL, S	Dicots, E, FL, F, S
Best Uses	Spot Tx	Spot Tx	Spot Tx	Spot Tx	Spot Tx		Whole lake	Spot Tx
Restrictions ⁴	None	Irrigation, potable intake	Irrigation, potable intake	Potable intake	Irrigation (varies), potable intake, swimming ³		Irrigation, potable intake	Irrigation 120d, Grazing/Haying, potable intake
Additives		Surfactant ²		Surfactant				Surfactant ²
Cost (acre-ft) ⁵	\$10 - \$52	\$10 - \$40	\$81 - \$118 \$60 - \$230 ⁶	\$8 - \$12/A	\$102 - \$277	\$35 - \$70	\$50 - \$102	\$70 - \$230

¹Copper complex that is effective on some submersed macrophytes. ²For application to emergent and floating-leaved species. ³This restriction not on all labels. ⁴Specific lengths of time and concentrations or setbacks can be different for differing products with the same active ingredient. Always read the label for restriction specifics. ⁵Costs reflect the range of concentrations specified in the label, cost from State Contract (2013, MA# 005 4393-13) for all but 2,4-D-based herbicides. Per acre-ft unless specified otherwise. ⁶Granular form.

There are a variety of herbicides available, each with different efficacy for different species (Table 1). In most cases, treating vegetation early in the season is the best strategy. At this time, biomass has not reached a maximum, so the amount of decomposition of submersed species will be minimized, oxygen sags can be avoided, and less chemical may be needed. Seed and reproductive structure production will also be minimized with early-season treatments. Subsequent treatments may be needed later in the year to treat new growth. When using fast-acting herbicides, treatment will be most effective following four general rules:

1. Correctly identify target species.
2. Apply herbicide in the mornings to maximize photosynthetic activity necessary for herbicide effectiveness.
3. Apply herbicides on sunny days to maximize photosynthetic activity necessary for herbicide effectiveness and avoid precipitation that can rinse herbicides from plant surfaces.
4. Apply herbicide under tranquil conditions. If it's windy surface spray will drift, and subsurface application will be more quickly displaced by wave current.

D. Mechanical Control

Mechanical control of aquatic vegetation is usually accomplished by the use of machinery or tools. Because it can be labor intensive and require multiple treatments in a season, mechanical control of aquatic plants should be used to target priority areas. These priority areas may include docks, fishing access points, beaches, or areas that are conducive to power boating. Individuals that choose to mechanically control vegetation around their permitted docks may do so by following the guidelines and permit by rule in Chapter 54 of the Iowa Administrative Code. The guidelines for the mechanical

removal of aquatic vegetation around docks and conducted by dock owners is addressed in another section of this document.

The control of submersed or floating aquatic vegetation by means of physical removal (e.g. hand pulling, raking, cutting, or seining) is currently the only acceptable method that can be used by dock owners. Raking, cutting, and seining can be effective, but multiple removal efforts may be needed over the course of the growing season. Dock owners should be aware of the rules and regulations associated with vegetation removal around private docks in public water bodies. Under no circumstance may dock or riparian owners apply herbicide on their own.

Mechanical harvesters can be used for large scale removal efforts. This method uses mechanical equipment to cut the top 5-6 feet of vegetation and remove it from the lake. It can also require re-cutting during the growing season and can be a full-time job. The cutter requires a high initial investment; therefore, there should be a lake plan in place before investing in this option. A dump site(s) must be established in advance so that vegetation is disposed of properly. Additionally, transportation permits need to be obtained before moving aquatic vegetation offsite. This is to ensure that the material is not taken to a location that may lead to an infestation of aquatic invasive species in other water bodies.

IV. Implementing Aquatic Vegetation Control

Optimal growth and survival of fish occurs when vegetation covers 10-40% of a lake's surface area. Though it then seems logical to expect negative impacts to a fishery at levels above or below this range, negative impacts have only been documented at the extremes in Iowa. Under conditions of virtually no vegetation coverage, low biomass and poor size distribution of bluegill and crappie has been documented as well as summer kill when algal blooms were present in a shallow lake. Under conditions of abundant plant coverage, over-recruitment and slow growth of bluegill have been observed, most likely due to inability of bass to be effective predators in dense vegetation. Winter-kill in shallow lakes with excessive macrophyte coverage has also occurred in Iowa.

The presence and intensity of aquatic vegetation is hard to predict and can vary year to year depending on environmental conditions. The best way to plan for an upcoming season of management is to base that plan on the previous year's growth and experiences.

A. Preventative Control

The Iowa DNR, CCB, local municipalities, and other stakeholder groups will continue to identify and participate in practices that improve the watershed where possible. Improving the watershed of Storm Lake is the best long term solution to managing aquatic vegetation and improving water quality and clarity.

Future hydraulic dredging efforts are unlikely for the foreseeable future. The Iowa DNR and Storm Lake Improvement Commission finished a long term dredging effort in 2017.

B. Biological Control

No form of biological control will be used in Storm Lake.

Note: Galerucella beetles were transplanted to Little Storm Lake years ago for the purpose of controlling Purple Loosestrife. No additional stockings of beetles are planned, but they are still present in the Little Storm Lake complex.

C. Chemical Control

Only herbicides that are approved and labeled for aquatic use can be applied in Storm Lake. Only the Iowa DNR, City of Storm Lake, City of Lakeside, or Buena Vista County may hire a contractor to apply to Storm Lake. The application will be conducted by a licensed (Category 5) applicator with approval from the Iowa DNR, through a sovereign lands construction permit, and following the guidance in this document. Riparian land and dock owners shall not apply herbicide along their shores or docks in Storm Lake.

Areas where aquatic herbicide may be applied are identified in Appendices B-F. These areas were identified as high use and that the public would benefit from an herbicide application.

A tank mix of Tribune (Diquat) and Komeen (Copper Complex) will be used to treat the identified areas (Table 2). DNR staff will maintain contact with the applicator to ensure proper timing of the application, but it will likely occur sometime around the end of May or beginning of June.

Table 2.— Breakdown of chemical type and amount to be applied to each treatment area.

Zone	Acres	Tribune	Cost	Komeen	Cost
Awaysis Beach	19.00	38	\$1680.00	38	\$1315.52
King's Pointe	3.28	6.56	\$315.00	6.56	\$246.66
Casino Marina	8.34	16.68	\$735.00	16.68	\$575.54
Kiwanis Beach	6.78	13.56	\$420	13.56	\$328.88

The Iowa DNR will provide 75% of the cost of the herbicide treatment via MFT funds. A local match of 25% will be required. The prices in Table 2 do not include mobilization, labor, and application costs.

The City of Storm Lake will contract with an approved DNR vendor.

D. Mechanical Control

Privately Owned Riparian Areas

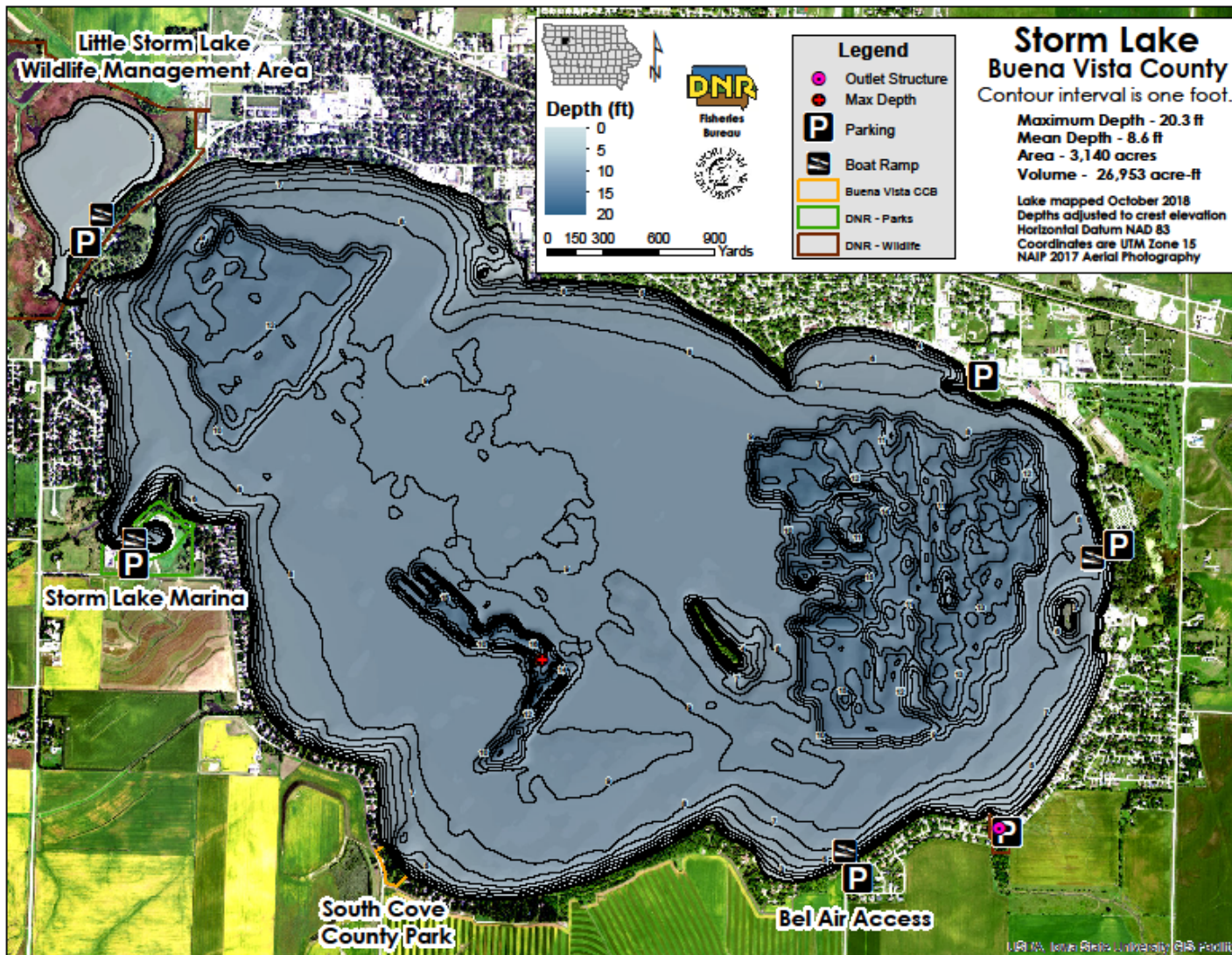
All vegetation removal or management conducted by riparian owners must be in accordance with State of Iowa Code 571, Chapter 54.5 (Appendix G). Dock owners may hire contractors to physically or

mechanically remove vegetation around their docks as long as the activities are in accordance with the State of Iowa Code 571, Chapter 54.5. Such activities may include, but are not limited to, vegetation removal via aquatic vegetation harvester or hand pulling while diving. An approved disposal site and approved routes to the disposal site can be found in Appendix H. **No chemical or biological control methods will be allowed by dock or riparian owners.**

Tips for Physical Removal of Aquatic Vegetation

1. Conducting plant removal early in the year before the vegetation has topped out will reduce the volume of vegetation removed from the management area. Periodic removal throughout the season will help keep from getting overgrown.
2. Cutting vegetation when the wind is blowing into shore can make for easier clean-up. Riparian dock owners should be aware that cut plants left in the lake can re-seed and release nutrients.
3. Riparian dock owners should only remove what is necessary to avoid extra work. Live vegetation left around the dock will increase the likelihood that fish will be present.
4. While it is not required by law, it is recommended that individuals that partake in mechanical or physical removal of vegetation around their docks remove the cut vegetation from the lake.
5. Harvested aquatic vegetation may also be used as compost or mulch on the owner's property. Aquatic vegetation is rich in nutrients and does not contain any seeds that will grow on land making it an ideal material for compost or mulch.

Appendix A.— Bathymetric map of Storm Lake.



Appendix B.— Awaysis Beach treatment area.



Appendix C.—King's Pointe Moorings treatment area.



Appendix D.— Casino Marina treatment area.



Appendix E.— Kiwanis Beach treatment area.



Appendix F.— University Beach treatment area.



Appendix G.— Selected Iowa Code section explaining rules related to the introduction and removal of aquatic plant life.

CHAPTER 54
RESTRICTIONS ON INTRODUCTION AND REMOVAL OF PLANT LIFE

[Prior to 12/31/86, Conservation Commission[290] Ch 47]

571—54.1(461A) Mushrooms and asparagus. Lands under the jurisdiction of the commission shall be open for the harvesting of mushrooms and asparagus during the hours the areas are open to the public.

[ARC 8594B, IAB 3/10/10, effective 4/14/10]

571—54.2(461A) Fruit. Lands under the jurisdiction of the commission shall be open for the harvesting of all varieties of nuts, fruits, and berries unless signs are posted prohibiting such activity. Nut, fruit, and berry gathering shall be permitted only during the hours the areas are open to the public and shall not be permitted in state preserves unless otherwise allowed by the preserves management plan.

[ARC 8594B, IAB 3/10/10, effective 4/14/10]

571—54.3(461A) American ginseng. The harvesting of American ginseng (*Panax quinquefolius*) is subject to regulation by 571—Chapter 78.

This rule is intended to implement Iowa Code sections 456A.24(11) and 461A.41.

[ARC 8594B, IAB 3/10/10, effective 4/14/10]

571—54.4(461A) Trees. The commercial harvest of trees from lands under the jurisdiction of the commission shall be done in accordance with 561—8.5(17A,456A,461A) and 561—8.6(455B), according to the department's Forest Ecosystem Management Guide, approved by the natural resource commission on December 8, 1994, and hereby adopted by reference.

This rule is intended to implement Iowa Code sections 461A.35 and 461A.41.

571—54.5(461A) Aquatic plants. This rule applies to the introduction and removal of plants in public waters as those waters are defined by rule 571—13.2(455A,461A,462A). For purposes of this rule, aquatic plants are those listed in subrule 54.5(6) and include vegetation that exists at or below the ordinary high water line of a waterway.

54.5(1) Permits.

a. The department may issue permits for the introduction and removal of aquatic plants in public waters. To be considered for a permit under this rule, applicants shall use the department's application form for sovereign lands construction permits, as described in rule 571—13.9(455A,461A,462A), and shall complete all relevant information on that application form. Applicants shall also provide any additional information as may be necessary, as described in rule 571—13.10(455A,461A). The term of the permit shall be stated in the permit. Permits are nontransferable and shall be subject to reevaluation upon expiration. Permits may be issued for between one and five years.

b. Cities and counties in Iowa may use chemicals, including pesticides and herbicides, to remove aquatic vegetation from water intake structures. However, such cities and counties shall be required to obtain a permit under this rule, and 567—Chapter 66 as may be required, for such activities.

c. Cities and counties in Iowa may use chemicals, including pesticides and herbicides, to remove aquatic vegetation for certain recreation and navigation purposes, including boating, fishing, and swimming. However, such cities and counties shall be required to obtain a permit under this rule, and 567—Chapter 66 as may be required, for such activities. Additionally, all such use of chemicals shall be conducted by a certified aquatic applicator and shall be subject to the terms of a vegetation management plan approved by the director. Issuance of such permits and approval of a vegetation management plan shall be at the sole discretion of the department.

54.5(2) Evaluation. The department shall evaluate all permits sought under this rule in accordance with the evaluation criteria enumerated in rule 571—13.6(455A,461A,462A). In addition, the department shall consider the following criteria:

a. For aquatic plant introduction:

(1) Unless otherwise approved by the department, all introduced plants shall be included in the list provided in subrule 54.5(6);

(2) Introduced plants shall not include cultivars;

(3) Plants shall be introduced for the purposes of preventing shoreline erosion, stabilizing bottom sediment, providing fish or wildlife habitat, or removing nutrients from the water;

(4) Plants shall be thoroughly rinsed away from the water into which they are being introduced prior to being transported to the site if the plants have not been cultivated on site in a manner to prevent any foreign nonplant or seed material from entering the water prior to introduction; and

(5) Plants shall be obtained from a seed source that is within 50 miles of the introduction area and from stocks of only cultivated material (i.e., material that has not been taken from natural areas) or from a source that is approved by the department. Approval for a seed source may be sought from the department by contacting the area fisheries management biologist.

b. For aquatic plant removal:

(1) The plants shall be removed by hand-cutting, hand-pulling, hand-raking or mechanical cutting only;

(2) The plants shall be removed to establish a designated travel lane from a boat dock that has been permitted in accordance with 571—Chapter 16. Such travel lane shall not exceed a 15-foot width, and the placement of such lane shall be subject to the review and approval of the department. A travel lane allowed under this rule may be in the same location during the term of the permit, may be sited by the department to accommodate vegetation, and may not necessarily be the most direct path from the dock to the open water area; and

(3) All plant material removed under the permit must be left in place or collected and composted on the land owned, leased or otherwise subject to use by the applicant that is adjacent to the removal area.

Unless otherwise provided by this rule, in no event may a person be allowed to apply chemicals including, without limitation, pesticides or herbicides to remove aquatic plants from public waters. For nonpublic waters that meet certain designations in 567—Chapter 66, a person may be required to seek a permit under the rules established herein to use pesticides.

54.5(3) Inspection requirements. For the purpose of inspecting for compliance with permit conditions, the department shall have the right to enter the property attached to the public water at or near the place of introduction or removal. This inspection shall include, without limitation, identification of introduced species; a determination as to whether the travel lane is being maintained in accordance with the permit conditions; and whether plant material, if removed, is left on site.

54.5(4) Violations. Persons in violation of this rule are guilty of a simple misdemeanor as described by Iowa Code section 461A.57.

54.5(5) Exceptions.

a. A dock permittee whose dock meets rule 571—16.4(461A,462A), 571—16.6(461A,462A), or 571—16.7(461A,462A) may remove aquatic vegetation without a permit if the aquatic vegetation:

(1) Creates a hazardous or detrimental condition in the boating area around the dock, or

(2) Covers a minimum of 75 percent of the boating area around the dock.

b. A dock permittee meeting one of the exceptions in paragraph 54.5(5) “*a*” must verify at inspection that the dock meets the criteria for a Class I, Class II or Class III dock permit and is limited to the following:

(1) Removal of vegetation in a 20-foot radius around the dock;

(2) Removal of a hazardous or detrimental condition when it interferes with safe boating passage and is located within the boating area around the dock;

(3) Creation of a 15-foot-wide boating pathway utilizing a direct route from the dock to open water;

(4) Adherence to the requirement to leave the vegetation in place or collect and compost it on land that is owned, leased or otherwise subject to use by the dock permittee and is adjacent to the removal area;

(5) Removal of the vegetation by hand-cutting, hand-pulling, hand-raking or mechanical cutting devices, excluding automated plant control devices that disturb the bottom substrate.

54.5(6) Appropriate plants. The department is committed to maintaining the natural integrity of public waters in the state and strengthening native populations of vegetation and wildlife in those waters. To that end, the following table comprises the plants that may be permitted to be introduced into public waters:

Scientific Name	Common Name
<i>Acorus americanus</i>	Sweet Flag
<i>Alisma plantago-aquatica</i>	Water Plantain
<i>Asclepias incarnata</i>	Marsh Milkweed
<i>Bidens cernua</i>	Nodding Beggars Ticks
<i>Bidens coronata</i>	Tickseed Sunflower
<i>Brasenia schreberi</i>	Water Shield
<i>Calamagrostis canadensis</i>	Blue Joint Grass
<i>Caltha palustris</i>	Marsh Marigold
<i>Carex atherodes</i>	Wheat Sedge
<i>Carex comosa</i>	Longhair Sedge
<i>Carex cristatella</i>	Crested Sedge
<i>Carex hystericina</i>	Bottlebrush Sedge
<i>Carex lacustris</i>	Hairy Sedge
<i>Carex normalis</i>	Greater Straw Sedge
<i>Carex pellita</i>	Wooly Sedge
<i>Carex prairea</i>	Prairie Sedge
<i>Carex scoparia</i>	Broom Sedge
<i>Carex stipata</i>	Awlfruit Sedge
<i>Carex stricta</i>	Upright Sedge
<i>Carex tribuloides</i>	Blunt Broom Sedge
<i>Carex vulpinoidea</i>	Fox Sedge
<i>Ceratophyllum demersum</i>	Coontail
<i>Eleocharis acicularis</i>	Needle Spikerush
<i>Eleocharis obtuse</i>	Blunt Spikerush
<i>Elodea canadensis</i>	Canada Waterweed
<i>Eupatorium perfoliatum</i>	Boneset
<i>Glyceria striata</i>	Fowl Manna Grass
<i>Iris versicolor</i>	Blue Flag Iris
<i>Juncus dudleyi</i>	Dudley's Rush
<i>Juncus torreyi</i>	Torrey's Rush
<i>Leersia oryzoides</i>	Rice Cutgrass
<i>Lobelia siphilitica</i>	Great Lobelia
<i>Lysimachia ciliate</i>	Fringed Loosestrife
<i>Lythrum alatum</i>	Winged Loosestrife

<i>Muhlenbergia mexicana</i>	Leafy Satin Grass
<i>Muhlenbergia racemosa</i>	Marsh Muhly
<i>Nymphaea tuberosa</i>	White Water Lily
<i>Poa palustris</i>	Fowl Bluegrass
<i>Polygonum amphibium</i>	Water Smartweed
<i>Pontederia cordata</i>	Pickerelweed
<i>Potamogeton nodosus</i>	Longleaf Pondweed
<i>Ranunculus secleratus</i>	Cursed Crowfoot
<i>Sagittaria latifolia</i>	Broadleaf Arrowhead
<i>Schoenoplectus acutus</i>	Hardstem Bulrush
<i>Schoenoplectus fluviatilis</i>	River Bulrush
<i>Schoenoplectus tabernaemontani</i>	Soft-Stem Bulrush
<i>Scirpus atrovirens</i>	Green Bulrush
<i>Sparganium eurycarpum</i>	Giant Burreed
<i>Spartina pectinata</i>	Prairie Cord Grass
<i>Stuckenia pectinatus</i>	Sago Pondweed
<i>Typha latifolia</i>	Broadleaf Cattail

In addition, an applicant may propose, as part of the application, species that do not appear on this list, which the department will consider. The department's consideration of species not on this list will be based on the commitment described above as well as the potential impact of the proposed species to the public water and ecosystem.

[ARC 8594B, IAB 3/10/10, effective 4/14/10; ARC 1703C, IAB 10/29/14, effective 12/3/14; ARC 5055C, IAB 6/17/20, effective 7/22/20]

These rules are intended to implement Iowa Code chapter 461A.

[Filed emergency 2/9/76—published 2/23/76, effective 2/9/76]

[Filed 3/9/84, Notice 2/1/84—published 3/28/84, effective 5/3/84]

[Filed emergency 8/8/85—published 8/28/85, effective 8/28/85]

[Filed without Notice 12/12/86—published 12/31/86, effective 2/4/87]

[Filed 8/11/95, Notice 6/7/95—published 8/30/95, effective 10/4/95]

[Filed ARC 8594B (Notice ARC 8332B, IAB 12/2/09), IAB 3/10/10, effective 4/14/10]

[Filed ARC 1703C (Notice ARC 1564C, IAB 8/6/14), IAB 10/29/14, effective 12/3/14]

[Filed ARC 5055C (Notice ARC 4920C, IAB 2/12/20), IAB 6/17/20, effective 7/22/20]

Appendix H.—Route and disposal site for aquatic vegetation



Staff Summary

9/29/2025

Agenda Item # A.3.



PO Box 1086
Storm Lake, IA 50588
p (712) 732-8000
f (712) 732-4114

REPORT TO:

FROM: Keri Navratil, City Manager

SUBJECT: **Motion to approve 28E Agreement**

BACKGROUND: This 28E Agreement recommended changes were discussed during the last Lake Improvements Commission meeting and the conclusion of the meeting, each Board of Director member was to share the recommended 28E Agreement with their respective entities.

FISCAL IMPACT: N/A

RECOMMENDATION: Motion to Approve 28E Agreement

ATTACHMENTS:

1. LIC 28E agreement KN EDITED

JOINT AGREEMENT

Lake Improvements Commission

The following Articles of Agreement hereby govern the operation of the Lake Improvements Commission.

ARTICLE I.

Name

The official name of this Commission is the Lake Improvements Commission.

ARTICLE II.

Legal Status

Section 1. Legal Status. This Committee is a voluntary joint undertaking pursuant to the provisions of Chapter 28E of the 2001 Code of Iowa (and all acts amendatory Thereto) by the City of Storm Lake, Iowa (a municipal corporation), the City of Lakeside, Iowa (a municipal corporation), Buena Vista County, Iowa (a municipal corporation) and the Lake Preservation Association For Storm Lake, Inc (an Iowa nonprofit corporation).

Section 2. Intent. It is the intention of the parties herein that this Commission which is set up for the purposes set forth hereafter represents a joint cooperative effort of each of the entities joined in this undertaking, and that the Commission is a separate legal entity.

ARTICLE III.

Commencement Of Operations

The operations of the Lake Improvements Commission commenced on or about October 15, 2002. At that time, an executed copy of this Agreement was filed with the Secretary of State and recorded with the County Recorder of Buena Vista County, Iowa.

ARTICLE IV.

Purpose

Section 1. Purpose of Agreement. The purpose of this Agreement is to guide operation of the Lake Improvements Commission, to set forth a Board of Directors to govern the

Commission, to provide for the financing of the operations of the Commission, and to specify which decisions must be made by the Commission and which may be delegated to the City Manager responsible for administrating the work of the Commission.

Section 2. Purpose of the Lake Improvements Commission.

- A. Water Quality/ Watershed Projects. Lake Improvements Commission purpose shall be to identify and promote water quality/watershed projects in the vicinity of the lake and lakefront of Storm Lake for the purpose of improving the water quality of the lake and for the purpose of minimizing the re-accumulation of silt in the lake to the greatest extent possible.

- B. Lake Vegetation Management. The Lake Improvements Commission with direction from the Iowa Department of Natural Resources shall be to approve a vegetation management plan.

ARTICLE V.

Board of Directors

Section 1. Board of Directors. The control and direction of the Lake Improvement Commission is hereby vested in the Board of Directors as herein established except as otherwise set forth in these Articles. Each director as set out hereafter shall be entitled to one vote.

The Board of Directors shall be appointed as follows: Two (2) members shall be appointed by the Mayor of Storm Lake with the consent of the Storm Lake City Council and such members shall either be the Mayor and/or Council Members of the City of Storm Lake; one (1) member shall be appointed by the Mayor of Lakeside with the consent from the Lakeside City Council and such member shall either be the Mayor or a Council Member of the City of Lakeside; two (2) members shall be appointed by the Chairman of the Buena Vista County Board of Supervisors with the consent of the Board and the members appointed shall be members of the Buena Vista County Board of Supervisors; two (2) members shall be appointed by the President of the Lake Preservation Association For Storm Lake, Inc. with the consent of the Board of Directors and such members shall be an officer and/or director of the corporation.

Each of the appointing officers or entities may, in their respective discretion, appoint an alternate director in the event of that director's absence or temporary inability to serve. A director's term shall be for four (4) years and shall terminate August 31 of the final year of the term. In the event that a Commission member ceases to serve as an officer or director of the entity from which the members was appointed, or if the Commission member should resign or die, the position of that director shall be deemed vacant and the entity responsible for appointing

that director shall appoint a successor director to complete the balance of the term of the directorship which is vacant as provided herein.

Section 2. Chairman and Vice Chairman. The Board of Directors shall elect from its voting membership a chairman and a vice chairman, who shall serve for a period of one year or until their successors are elected, or until such time as the said chairman or vice chairman shall no longer qualify as a director, at which time the then remaining members of said Board of Directors shall elect a new chairman and/ or vice chairman.

Section 3. Secretary-Treasurer. The City Clerk for the City of Storm Lake or his or her designee shall act as secretary - treasurer for the Commission.

Section 4. Meetings. The Board of Directors shall meet no less than two times per year, and at such other times as the chairman and/ or vice chairman shall call such meetings of the Board.

Section 5. Employees. The Commission itself shall not have employees. The administration and work of the Commission shall be as set forth in Article VIII.

Section 6. Quorum. A majority of the voting membership of the Board of Directors appointed as set forth above shall constitute a quorum for the conduct of business of the Lake Improvements Commission.

ARTICLE VI.

Powers And Duties

Section 1. Powers and Duties. The Lake Improvements Commission shall have the power to do all tasks necessary to carry out the stated purposes insofar as the same are not in conflict with any of the existing laws within in the State of Iowa, and subject to the limitations relating to employees contained in Article VII.

A. The duties of this Commission shall include the adoption by the Board of Directors of such bylaws as shall be necessary for the proper operation of this Commission, and the providing of members of the Commission with copies of said bylaws.

B. The Commission will, as necessary, determine how any undesignated funds will be allocated. The Commission shall approve all contracts with independent contractors.

C. The Commission shall approve the Vegetation Management Plan provided to the Iowa Department of Natural Resources.

D. The Commission shall also be responsible for pursuing possible funding of the various projects proposed by the Commission including voluntary contributions, grants from

governmental entities or private foundations, and/ or requesting funding from the government entities that are parties to this Agreement.

ARTICLE VII.

Administration

Section 1. The Storm Lake City Manager is hereby appointed to administer the business affairs of the Lake Improvements Commission. The City Manager be responsible for administering all contracts entered into by the Commission and may sign contracts which have been authorized by the Commission on behalf of the Commission. The Storm Lake City Manager shall further prepare, when requested, financial statements which show the financial resources and liabilities of the Commission and shall propose an annual budget on a calendar year basis for conducting and implementing the projects approved by the Commission.

Section 2. Financial Controls. The Storm Lake City Clerk is hereby designated as the treasurer for the Lake Improvements Commission and shall disperse funds on behalf of the Commission. The parties specifically agree that the City Clerk of the City of Storm Lake shall receive and hold on behalf of the Commission all funds designated for payment to the Commission by any of the governmental entities which are parties to this Agreement. all funds received as contributions by the Lake Preservation Association for Storm Lake, Inc. from its members which the Board of Directors of the Lake Preservation Association determines shall be dedicated to the projects of this Commission, and all funds received as grants from governmental entities or private foundations which are designated for the Lake Storm Lake preservation project, whether those grants have been applied for in the name of the Lake Improvements Commission, or in the name of one of the parties to this Agreement. All funds received by the Clerk shall be held in accounts in the name of the Commission which are segregated from the funds of the City of Storm Lake and the Clerk shall further segregate those funds into accounts for funds which were dedicated specifically for water quality/watershed projects, funds which were designated specifically for vegetation management projects, and undesignated funds. Any interest earned from the Lake Improvements Commission accounts shall be retained in said Lake Improvements Commission accounts for use by the Commission. The Commission may request an audit of Commission accounts at times determined by the Commission, with the expense of such audit to be paid from Commission funds.

Section 3. Employees. To the extent that the Commission determines that it desires to implement its projects directly rather than contracting with third parties to implement the projects, the employees necessary to implement the projects will be hired by the City of Storm Lake and will be for all purposes considered to be employees of Storm Lake. The City Manager for the City of Storm Lake shall have the sole authority to hire and fire those employees. All costs of compensation for such employees, including the costs of any benefits to which those employees shall be entitled, and the cost of any employment taxes paid on behalf of those

employees, shall be reimbursed to the City of Storm Lake from the funds of the Lake Improvements Commission held by the City Clerk on behalf of the Lake Improvements Commission. To the extent that any existing supervisor of the City of Storm Lake is assigned the responsibility for supervising such employees, the Storm Lake City Manager shall recommend, and the Commission shall approve, an appropriate percentage of that supervisor's compensation and benefits which shall be reimbursed from Commission funds.

ARTICLE VIII.

Dedication of Resources

Section 1. Dredge System. Earlier in its history, the Commission played a leadership role in a dredging project on the lake, between 2002-2017. Buena Vista County purchased the dredge to be made available to the Commission and its agents. The county was responsible for insuring the dredge against casualty loss. The Commission was responsible for cost of repairs and maintenance of dredging equipment during the project. The dredge was ultimately sold by Buena Vista County at the completion of the project.

Section 2. Former Spoil Site. The City of Storm Lake purchased the Northwest Quarter NW/ 4) of Section Twelve (12), Township Ninety (90) North, Range Thirty -Seven (37) West of the 5th P.M. as an appropriate spoil site for use in connection with the dredging of the lake. The City of Storm Lake agreed that the land would be available for such purpose by the Commission for the duration of the dredging project, or until filled to capacity. The City retains ownership of the land it purchased, with rights for future development. A portion of the spoil location is owned by the Lake Improvements Commission, which retains rights for future use.

Section 3. Other Assets. Except as otherwise provided in this Agreement, all assets acquired with Commission funds shall be considered assets of the Commission as a corporate entity.

ARTICLE IX.

Funding

Section 1. Buena Vista County. As of this date, Buena Vista County makes no commitment to provide additional funds, as no dredging or other operation is currently occurring.

Section 2. City of Storm Lake. As of this date, the City of Storm Lake makes no commitment to provide additional funds, as no dredging or other operation is currently occurring.

Section 3. City of Lakeside. As of this date, the City of Lakeside makes no commitment to provide additional funds, as no dredging or other operation is currently occurring.

Section 4. Lake Preservation Association for Storm Lake, Inc. As of this date, the Lake Preservation Association makes no commitment to provide additional funds, as no dredging or other operation is currently occurring. The Lake Preservation Association may continue to seek voluntary contributions for projects at its discretion.

Section 5. Future Funding. The parties all acknowledge that additional lake improvements efforts may be needed in the future, requiring funding considerations. In that event, the long-term success of the Commission will be dependent upon receiving the funds necessary to cover the cost of proposed projects.

ARTICLE X.

Membership

Section 1. General. The parties to the Agreement shall constitute its membership. Benefits of the membership shall include the economic advantage of a joint and concerted effort to preserve and improve Lake Storm Lake for the benefit of all of the parties.

Section 2. Duration of Membership. A member of this Commission shall continue its membership herein until such time as the member terminates its membership, as hereinafter provided; or the Commission is dissolved as hereinafter provided.

Section 3. Membership Termination. The membership of an individual party to this Agreement may be withdrawn from this Commission in the following manner

A. Membership shall be terminated when the governing party of the member adopts a resolution withdrawing from the Commission. A copy of said resolution, bearing the signature of the Chairman, Mayor or President thereof, shall be sent to the Chairman of the Commission.

B. Withdrawal of a member from the membership of this Commission shall be effective upon receipt of the resolution by the Chairman of the Commission.

C. Termination of membership by a member shall not relieve that member of its obligation to pay any amount previously pledged toward the operations of the Commission to the extent such amount is then unpaid.

C. Termination of membership of any party authorized to appoint a director or directors in that parties sole discretion shall also effect a termination of that particular director's or directors' position effective at such time as the parties' membership terminates.

ARTICLE XI.

Insurance

During the period of operation of the Commission and for so long as necessary after the completion of dredging until all spoil sites are returned to farming or other suitable uses other than as a spoil site, the Commission shall purchase and maintain General Liability insurance covering all operations of the Commission in an amount not less than \$1,000,000 per occurrence and \$2,000,000 aggregate, naming the Commission as the principal insured and each of the parties to this Agreement as an additional insured. During this same period, the Commission shall purchase Public Officials Liability Insurance on behalf of its Board of Directors in such amount as the Board may direct. The Commission shall purchase casualty and other forms of insurance as circumstances may warrant.

ARTICLE XII.

Dissolution

This Agreement and the Commission herein created may be dissolved at any time with the unanimous vote of the membership. A party which is a governmental body may not vote for dissolution until its respective Board or Council shall pass a resolution supporting the dissolution of the Commission. The Commission shall not be dissolved when there remains any indebtedness incurred by such Commission until such indebtedness is paid. Upon such a dissolution, all assets of this Commission shall be liquidated and the net proceeds obtained therefrom shall be distributed to one or more of the parties in such amounts as the Commission shall agree, or alternatively, to another nonprofit tax exempt entity involved in projects similar in purpose to the purposes previously set forth for this Commission. The spoil site land described in Article IX, Section 2, including any additional land purchased by the City with City funds, shall, at all times, remain titled in and be the property of the City of Storm Lake. Any auxiliary equipment purchased with funds provided by the City of Storm Lake shall not be considered an asset of the Commission and shall be returned to the City.

ARTICLE XIII.

Amendments

The terms of these Articles of Agreement may be amended by a three-fourths vote of the Board of Directors at any regular meeting, provided that each individual member thereof shall have been mailed a copy of said proposed Amendment at least 30 days prior to the date action is proposed to be taken upon the Amendment.

ARTICLE XIV.

Severability

If any of the provisions of these Articles of Agreement, or the application thereof to any person or circumstance are held to be invalid, such invalidity shall not affect other provisions or applications, and to this end the provisions of these Articles are deemed and declared to be severable. Governmental entities which are parties to this Agreement certify that they execute this Agreement pursuant to authority granted by resolution from their respective governmental bodies.

Dated this 29th day of September, 2025

CITY OF STORM LAKE, IOWA

BY: _____
Mayor

ATTEST:

City Clerk

BUENA VISTA COUNTY
BOARD OF SUPERVISORS

BY: _____
Chairman

ATTEST:

County Auditor

CITY OF LAKESIDE, IOWA

BY: _____
Mayor

ATTEST:

City Clerk

LAKE PRESERVATION ASSOCIATION
FOR STORM LAKE, INC.

BY: _____
President

ATTEST:

Secretary

Staff Summary

9/29/2025
Agenda Item # A.4.



PO Box 1086
Storm Lake, IA 50588
p (712) 732-8000
f (712) 732-4114

REPORT TO:

FROM: Tyler Gibbins, Finance Director

SUBJECT: **Financial Report September 2025**

BACKGROUND: Current balance sheet and activity report for fund 960, Lake Improvement Commission.

LIC- Fund 960 3-Year Cash Flow

Fiscal Year	2026	2027	2028
Cash Balance	\$41,029	\$35,413	\$29,415
Revenues	\$821 *	\$708 *	\$588 *
Insurance Expense	\$6,437 *	\$6,707 *	\$6,989 *
Contractual Service Expense			
Ending Balance	\$35,413	\$29,415	\$23,014

NOTE: " * " Denotes Estimates

The insurance estimates include the termination of the \$4,000,000 excess liability insurance.

FISCAL IMPACT: Since reporting to the Commission at the June 2025 meeting, there has been no activity.

Fund 960 (Lake Improvement Commission) currently has a fund balance of \$41,029.30.

RECOMMENDATION: Approve the Financial Report.

ATTACHMENTS:

1. LIC Balance Sheet
2. LIC Financial Activity



Storm Lake, IA

Balance Sheet

Account Summary

As Of 09/30/2025

Account	Name	Balance
Fund: 960 - Lake Improvement Commission		
Assets		
960-0000-00-1110	Cash	0.00
960-0000-00-1150	Investments	0.00
960-0000-00-1199	Claim on Cash	41,029.30
960-0000-00-1220	Accounts Receivable	0.00
960-0000-00-3870	Revenues YTD	0.00
960-9600-00-3870	Revenues YTD	0.00
	Total Assets:	41,029.30
		<u>41,029.30</u>
Liability		
960-0000-00-2009	AP Pending Due To Pool	0.00
960-0000-00-2020	Accounts Payable	0.00
960-0000-00-3880	Expenditures YTD	0.00
	Total Liability:	0.00
Equity		
960-0000-00-3860	July 1 Fund Balance	41,029.30
	Total Beginning Equity:	41,029.30
Total Revenue		0.00
Total Expense		0.00
Revenues Over/Under Expenses		0.00
	Total Equity and Current Surplus (Deficit):	41,029.30
	Total Liabilities, Equity and Current Surplus (Deficit):	<u>41,029.30</u>



Storm Lake, IA

Detail vs Budget Report

Account Detail

Date Range: 07/01/2025 - 09/30/2025

Account	Name	Encumbrances	Fiscal Budget	Beginning Balance	Total Activity	Ending Balance	Budget Remaining	% Remaining
960 - Lake Improvement Commission								
Asset								
960-0000-00-1199	Claim on Cash	0.00	0.00	41,029.30	0.00	41,029.30	-41,029.30	0.00 %
Asset Totals:		0.00	0.00	41,029.30	0.00	41,029.30	-41,029.30	0.00 %
Equity								
960-0000-00-3860	July 1 Fund Balance	0.00	0.00	-41,029.30	0.00	-41,029.30	41,029.30	0.00 %
Equity Totals:		0.00	0.00	-41,029.30	0.00	-41,029.30	41,029.30	0.00 %
960 - Lake Improvement Commission Totals:		0.00	0.00	0.00	0.00	0.00	0.00	0.00 %
Report Total:		0.00	0.00	0.00	0.00	0.00	0.00	0.00 %

Fund Summary

Fund	Encumbrances	Fiscal Budget	Beginning Balance	Total Activity	Ending Balance	Budget Remaining	% Remaining
960 - Lake Improvement Commission	0.00	0.00	0.00	0.00	0.00	0.00	0.00 %
Report Total:	0.00	0.00	0.00	0.00	0.00	0.00	0.00 %